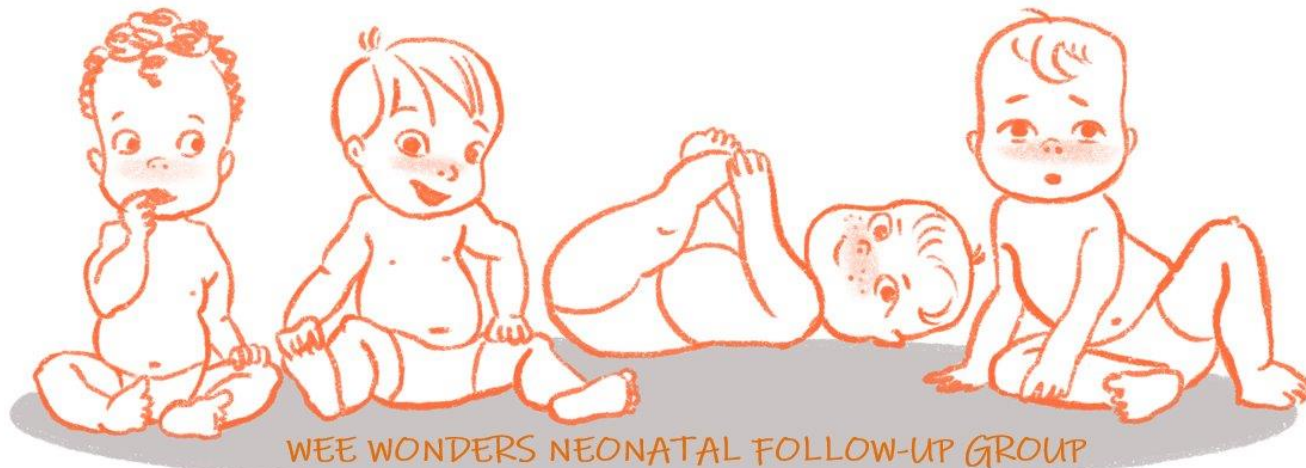


Wee Wonders: a novel & alternative approach to moderate preterm follow-up and the unexpected outcomes



Fiona McKeown
Neonatal Physiotherapist
Simpsons Centre for Reproductive Health
Fiona.mcKeown@nhs.scot

 @FionaMcKeownNeo

Overview

Why follow up moderate preterms

Pilot group structure

Developmental outcomes

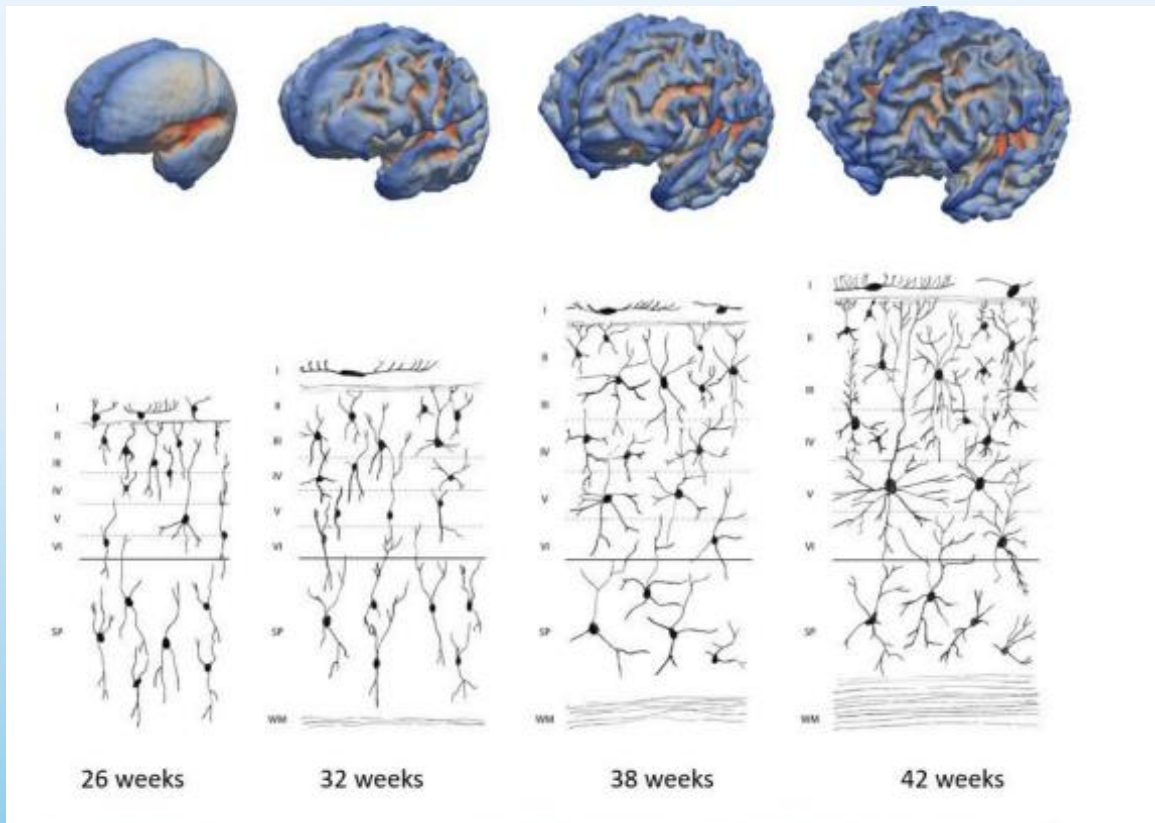
Parental Outcomes

Further research

But 34 weeks isn't "that early"

Babies born at 34 weeks have 15% less time in utero than those born at 40 weeks

Parents experience the same trauma of preterm birth and separation whilst baby is on the NNU...



But! Parents feel they have less opportunities for peer support

Image from: Battalle et al. 2018. "Different patterns of cortical maturation before and after 38 weeks gestational age demonstrated by diffusion MRI in vivo". Neuroimage.

But 34 weeks isn't "that early"

Babies born at 34 weeks have 15% less time in utero than those born at 40 weeks

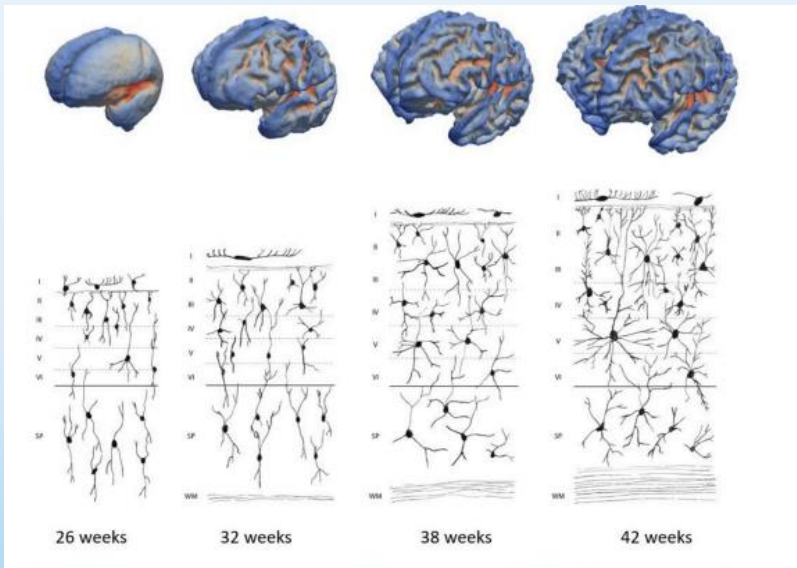


Image from: Battalle et al. 2018. "Different patterns of cortical maturation before and after 38 weeks gestational age demonstrated by diffusion MRI in vivo". Neuroimage.

Parents experience the same trauma of preterm birth and separation whilst baby is on the NNU...



But! Parents feel they have less opportunities for peer support

Group Structure

Moderate Preterm Pilot

Discharge from the NNU

Virtual consultant appointment
approximately 6 weeks after leaving
NNU

Attend 6 weekly sessions of "Wee
Wonders"- between 6-18weeks CGA

3mo Prechtl GMA- video uploaded to V-
create at end of group sessions

Absent or abnormal
fidgety

Appointment with doctor in
clinic 9 and 15 months from
due date

Absent or abnormal
fidgety

Attend
Developmental
Follow Up clinic

Max of six families,
multiples count as
one family

Physiotherapy - developmental milestones,
gross motor skills, risks of prematurity

Community nurses - resus training, choking,
management of common illnesses

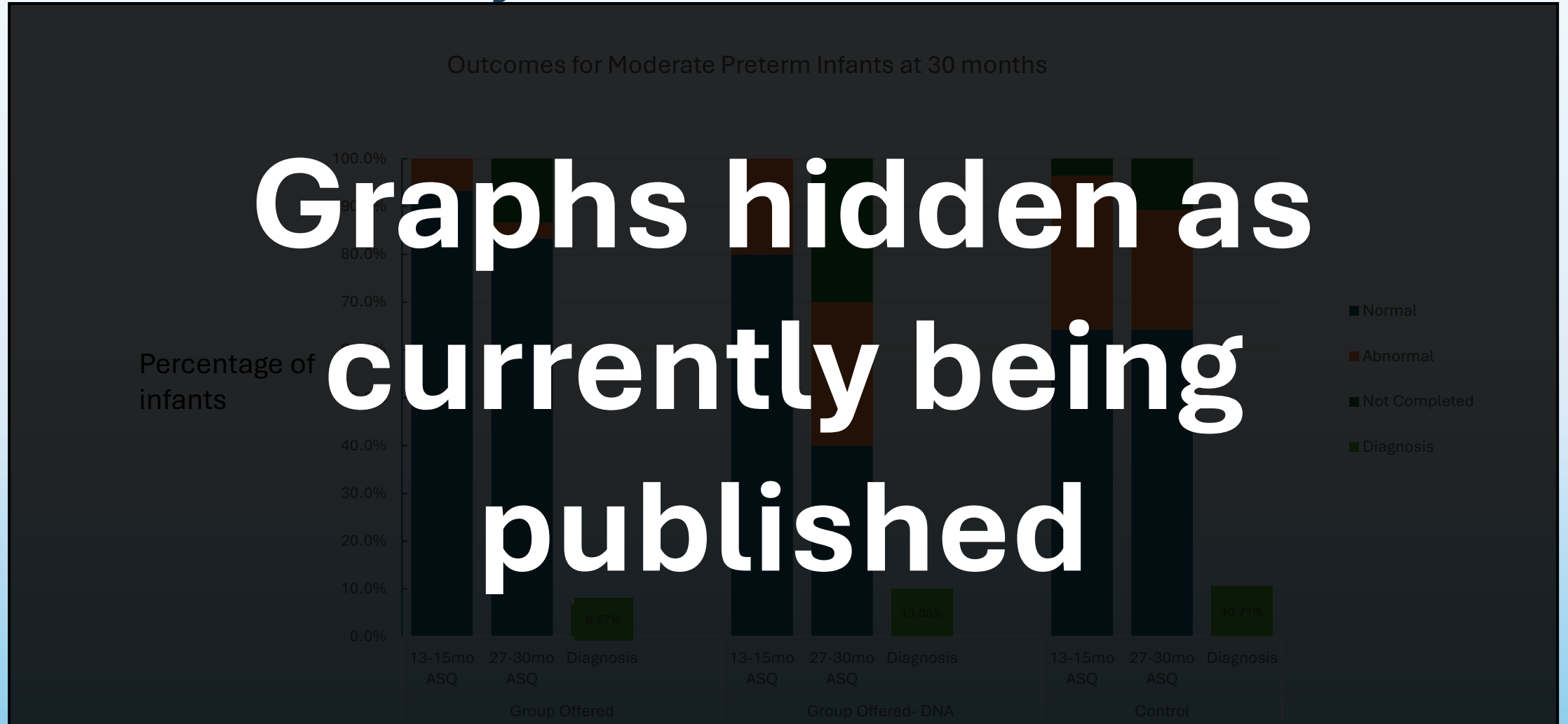
Psychology - parental wellbeing and bonding
with your baby

Speech and Language therapy - supporting
early communication

Occupational Therapy - play and interaction

Dietetics - managing nutrition in preterm
babies, weaning and reflux

Did it make any difference?



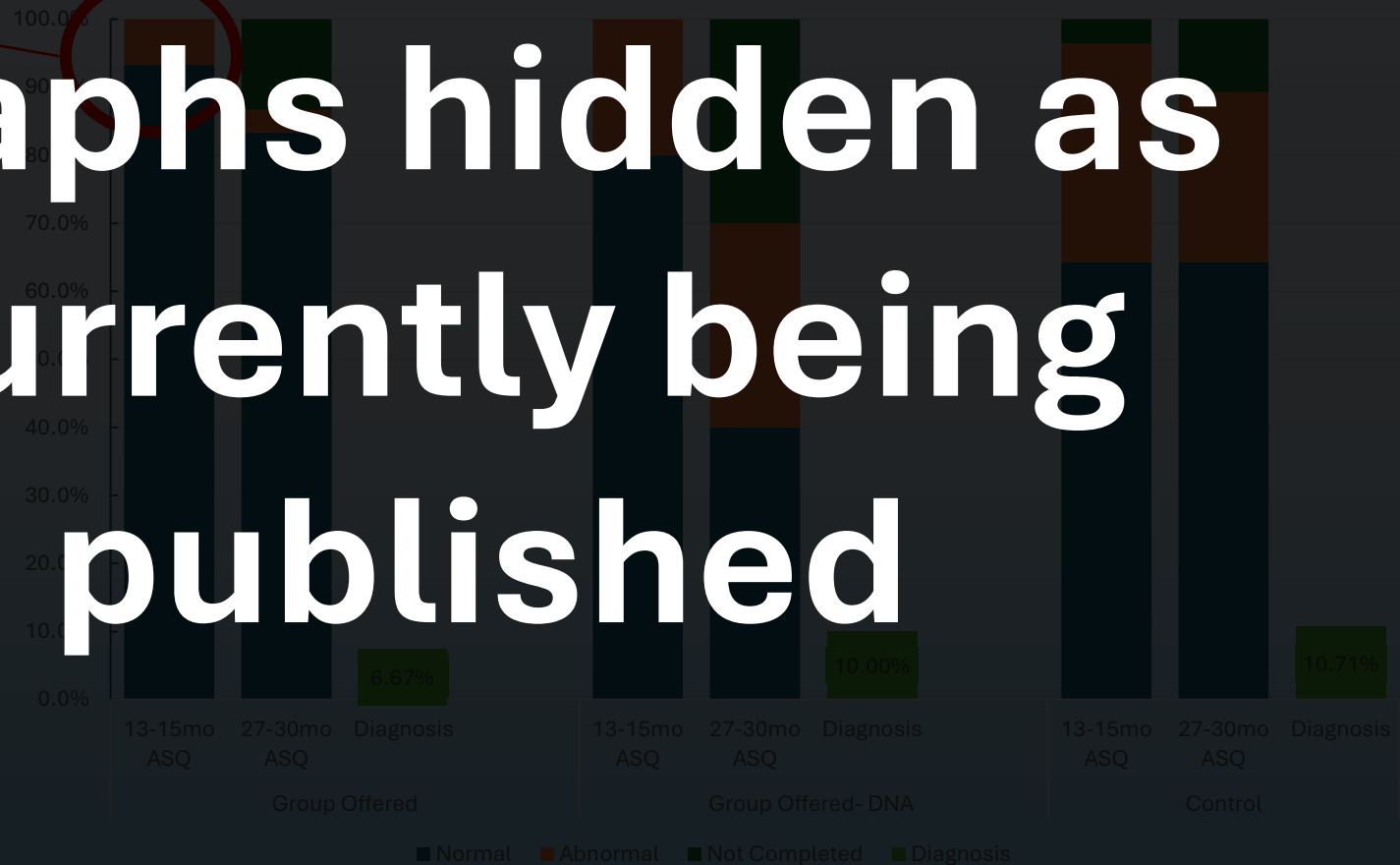
Graphs hidden as currently being published

Did it make any difference?

6.7%
CP Diagnosis by 6
months

Outcomes for Moderate Preterm Infants at 30 months

Graphs hidden as
currently being
published



Did it make any difference?

Outcomes for Moderate Preterm Infants at 30 months



Graphs hidden as currently being published

Benefit from ward-level intervention?

Did it make any difference?

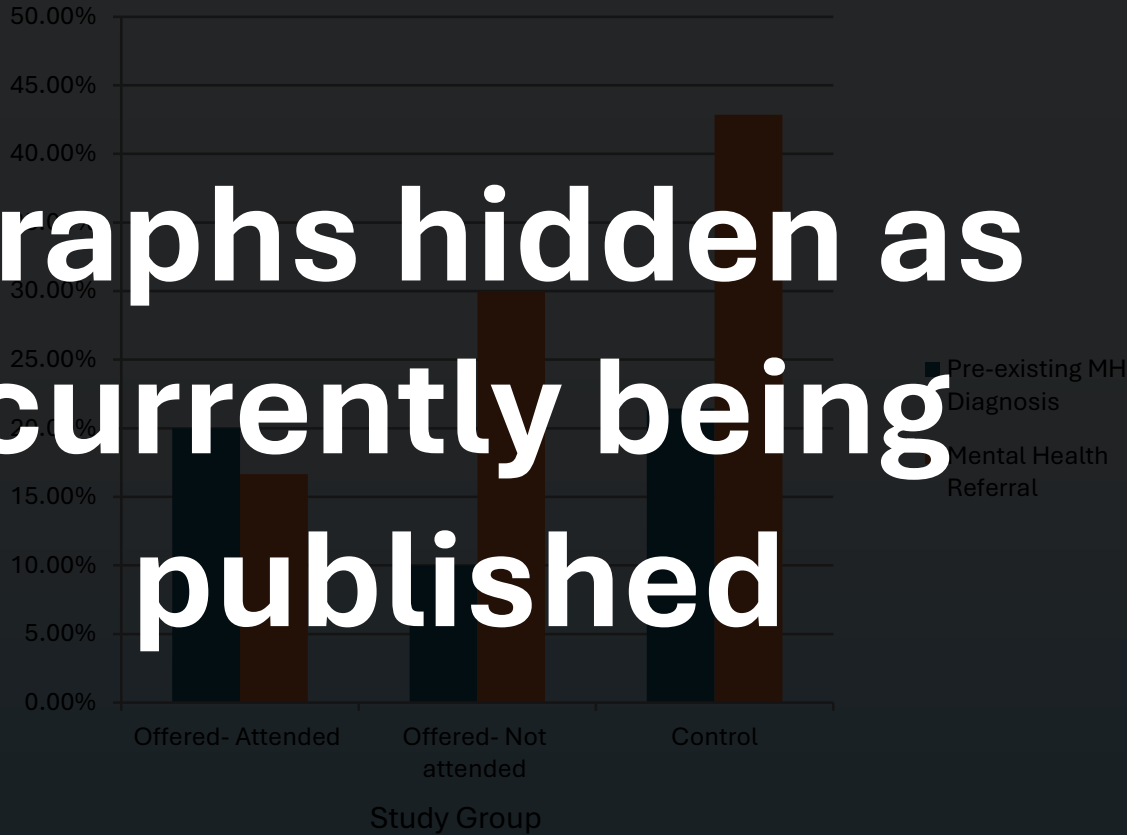
**Graphs hidden as
currently being published**

Pattern of
difficulty
engaging with
services?



Parent Benefits

Graphs hidden as currently being published



Benefits of WWG

Reduction in mild and moderate developmental problems

Earlier identification of serious complications of prematurity

Reduced cost to NHS

- Consultant time
- Health visitor contacts
- Community therapy referrals
- Parental mental health referrals

Improved parental wellbeing

- More confident
- Supportive peer group
- Reduced anxiety
- Normalising of child development - reduced “abnormal” ASQ

Sometimes the real wins
can't be represented by a
figure, infographic or cost
saving...

Mum during WWG:

"I'm not sure I could have another child and risking going through the neonatal unit again. We are lucky to have found out about A's CP really early, but what if that didn't happen again?"



Mum during WWG:

"I'm not sure I could have another child and risking going through the neonatal unit again. We are lucky to have found out about A's CP really early, but what if that didn't happen again?"

Two and half years later....

"Baby number 2 safely arrived and A is loving being a big sister. I even got to experience labour! Now 3, A is discharged from OT, has minimal physio input and it would be a challenge for any therapist to spot her CP"

Future Goals



One to one support for vulnerable families

Pre-doctoral fellowship

Health economic analysis

Parent focus groups to be run by independent charity

Enhanced therapy provision on NNU- across Lothian

Progress to full MDT model- AHP's available until 15 months

Geographical equity- not currently available in West Lothian

Longitudinal outcomes of fully implemented combination model



A big shout out to the most amazing team and Simpsons Special Care Babies for their ongoing support. Thank you to A's mum for sharing hers and her family's journey.



Fiona McKeown
Neonatal Physiotherapist
Simpsons Centre for Reproductive Health
Fiona.mckeown@nhs.scot

 @FionaMcKeownNeo



Thank you for listening! Any questions, comments or ideas welcome



Fiona McKeown
Neonatal Physiotherapist
Simpsons Centre for Reproductive Health
Fiona.mckeown@nhs.scot

 @FionaMcKeownNeo

Contact: fiona.mckeown@nhs.scot