

LOTHIAN FALLS CONFERENCE

September 17, 2025
Garrett Sprague

Smplicare
Enjoy later life



Today's Discussion

15:30 - 15:40	The Smplicare Story
15:40 - 15:55	The Smplicare Platform
13:55 - 16:00	What's Next

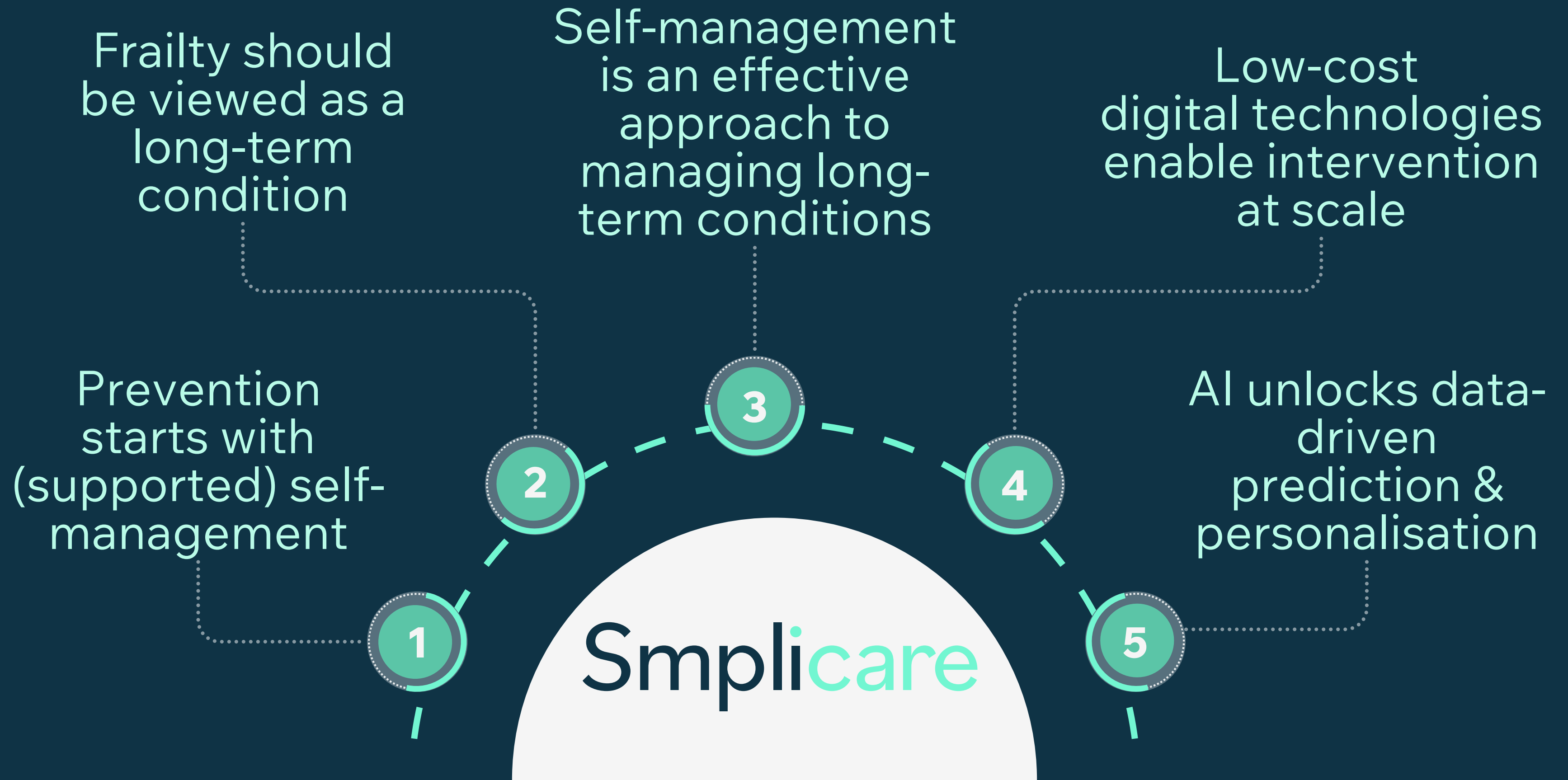
Smplicare

The Smplicare Story





“We both just knew
this was the
beginning of the end”



The image features a dark blue background. At the top center is a large white semi-circle containing the word "Smplicare" in a dark blue sans-serif font. Below this, a dashed teal arc connects three teal circles. Each circle has a white dotted border and a teal outline. A dotted line extends from the left circle to the text "Falls can be predicted & prevented". A dotted line extends from the right circle to the text "Frailty can be prevented, reversed & slowed". A dotted line extends from the bottom circle to the main slogan at the bottom.

Smplicare

Falls can be
predicted &
prevented

Frailty can be
prevented,
reversed &
slowed

**Everyone, everywhere
should Enjoy Later Life**

Groundbreaking Research: 2022 - 2024

300

Older adults

20+

Partners

210

Falls reported from 105 fallers

1000

Participant engagements



fitbit GARMIN POLAR TANITA



Smplicare

Smplicare Fall-Risk Algorithm: TRL 6

1

Analyse daily
insights from real-
world wearable data



Activity

Sleep

Energy

Heart
Rate

SFRa: Smplicare Fall Risk Algorithm

2

Continuously evaluate
patterns over
7 & 15 day windows

73%

7-Day

85%

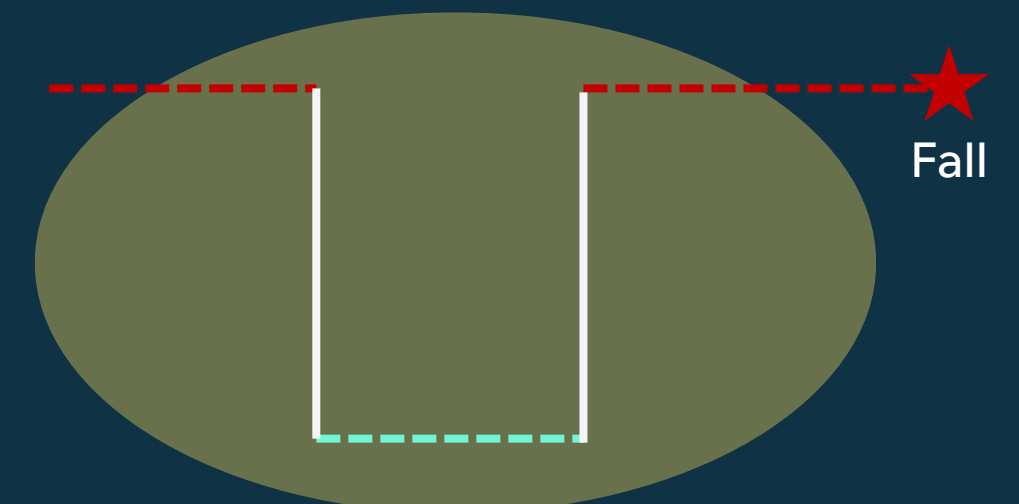
15-Day

3

SFRa indicates
risk-level as
High or Low

High

Low



Intervention Window

Proactive Fall Risk Identification

Pattern recognition system that identifies when a persons habits and physiological signals mirror the patterns in our dataset when falls occurred

What is the target population?

- Living in the community
- People experiencing frailty - between CFS 4-6, maybe 3-7

What does “accuracy” mean?

The % of times where when deployed against the testing data the SFRa successfully indicated that a fall would occur

- 15-day: 85/100 falls
- 7-day: 73/100 falls

It is not:

- 100% accurate - falls are random. It will produce false positives / negatives
- Diagnostic
- A prediction of the future
- Capable of telling us that someone will fall on a specific day or time
- Trained on data from individuals in the care home or hospital

5GIR Pilot: Oct 2024 - Mar 2025

35

Older adults
Avg. Age: 73



Frailty Scale
Pre - Moderate (4-6): 70%



Fear of Falls: 71%
FaME: 78%
Difficulty Walking: 83%



£98k

5GIR Pilot: 3-month Outcomes





“The exercises are already helping me **get my confidence back.**”

“This weekend, I went to the football without my stick for the first time in a long while.”

- John



S5GConnect
Greater Glasgow



“We offer one class a week, which if I’m honest, isn’t enough”

“**Smplicare can provide the evidence** demonstrating our impact allowing us to continue investing in our programmes.”

- **Ryan Gilmour**, Senior Health Development Officer



S5GConnect
Greater Glasgow

Smplicare

The Smplicare Platform



Accessible, Built with Older Adults



User Centred

Co-designed with older adults;
Continuous user feedback with
terative improvements.



Accessible

WCAG 2.2 AA compliant; Large text,
high contrast, simplified flows for older
adults; tested across devices &
operating systems.



Safe, Secure & Compliant



Data in UK/EU only

UK/EU (AWS eu-west-1, Live
Data Protection Impact
Assessment (v1.3))



Certified

Cyber Essentials certified; DSPT
certification pending; aligned
with UK GDPR and NHS Digital
standards



Tested

A+ penetration test result;
Load/performance testing
demonstrates capacity for
thousands of concurrent users



Controlled

Two-Factor Authentication, role-based
access, encryption at rest & in transit;
Access logging & audit trails

Clinically Safe & Preventative



Reviewed

Independent CSO-approved safety case report; compliant with DCB0129/0160



Non-MDR

Not a regulated medical device (no diagnosis, no treatment, no triage); Preventative, wellbeing-focused use only.



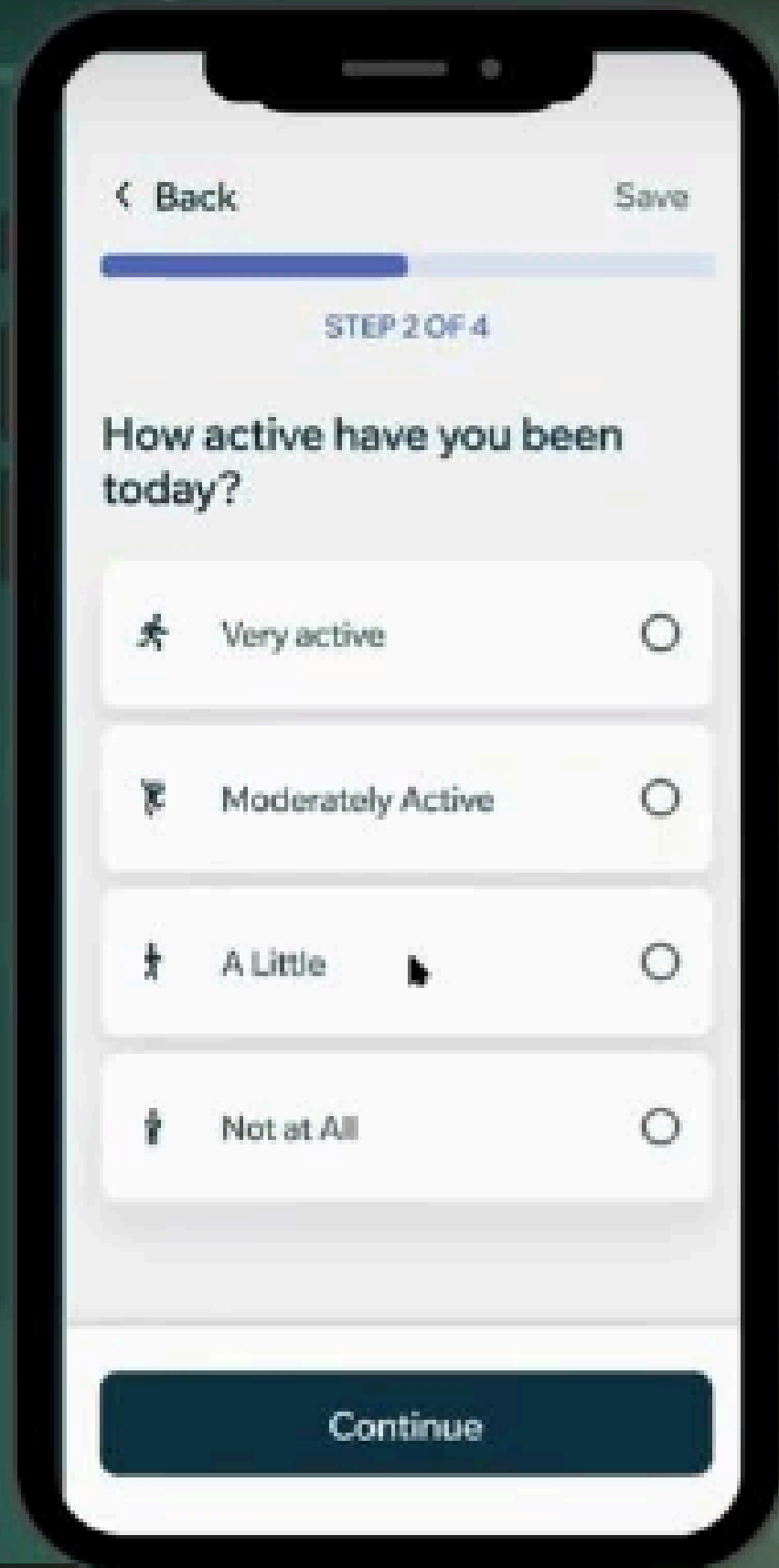
Built-in Safety

Clinical hazards identified and mitigated; all residual risks at acceptable levels.

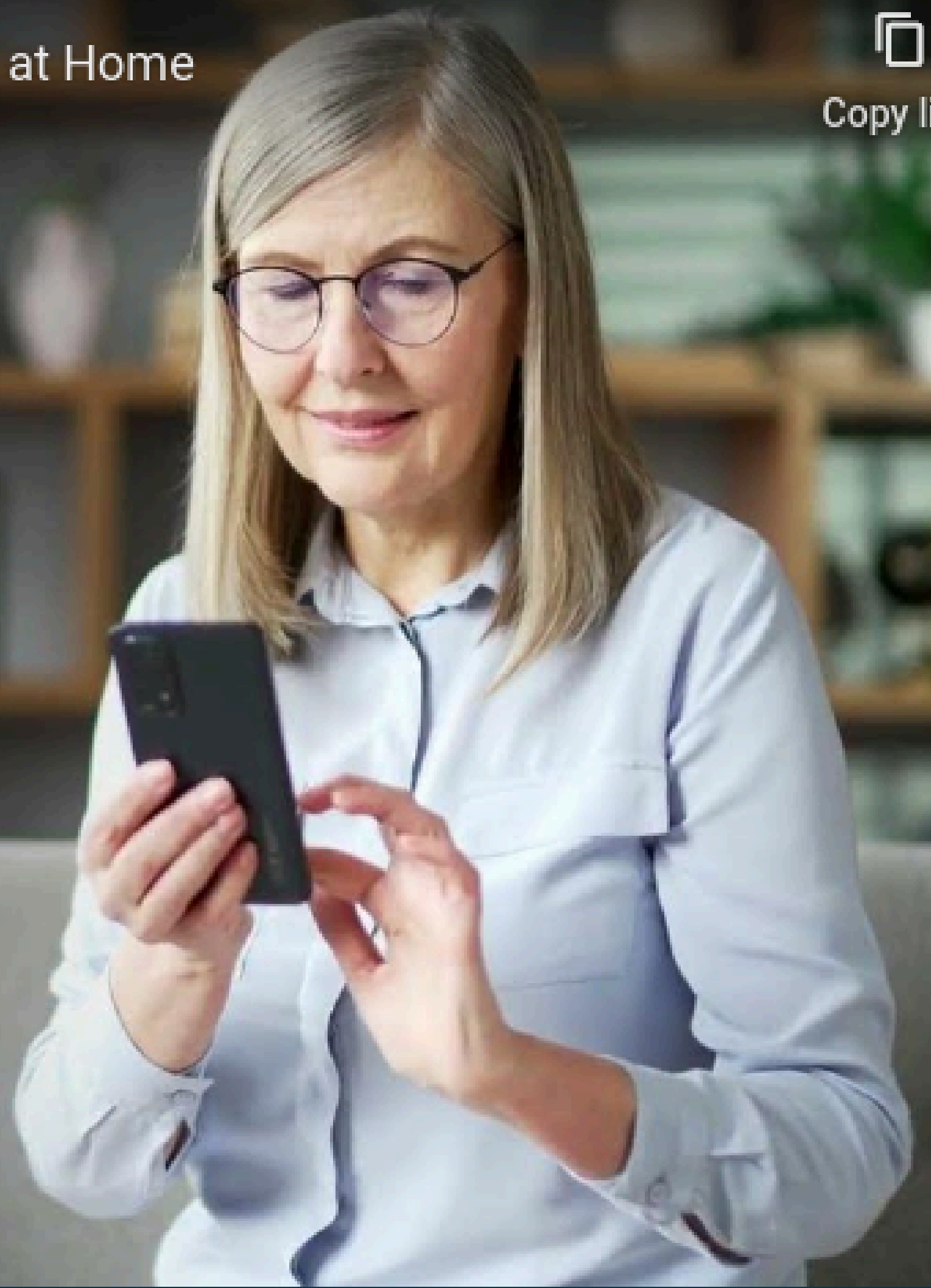
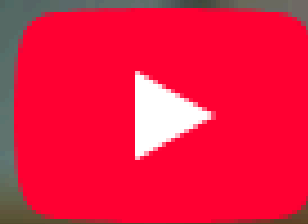


Standardised

Aligns with NICE Falls Guidelines; Embedded safety reviews at all stages of product lifecycle.



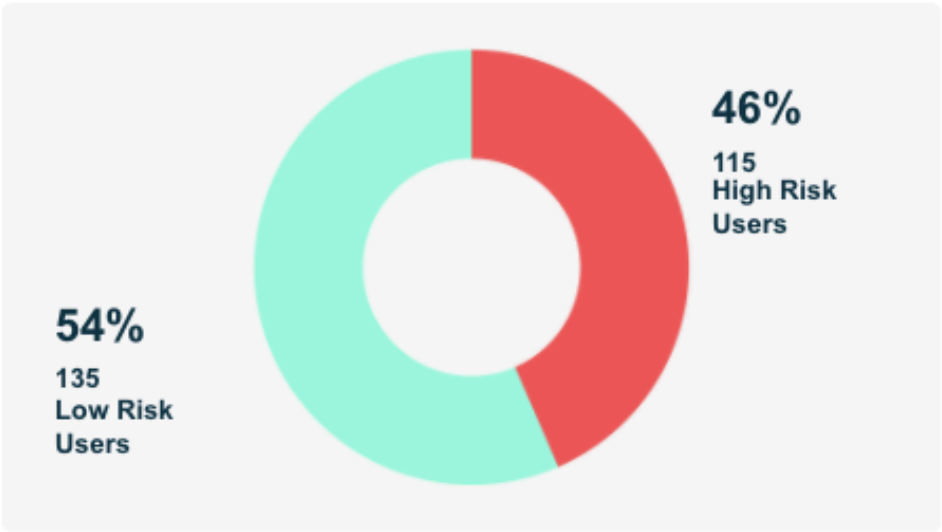
The image shows a smartphone screen with the Smplicare app interface. At the top, there is a navigation bar with a back arrow and the text 'Back' on the left, and the text 'Save' on the right. Below this is a progress bar that is partially filled with blue. Under the progress bar, it says 'STEP 2 OF 4'. The main question on the screen is 'How active have you been today?'. There are four radio button options, each with a person icon and a label: 'Very active', 'Moderately Active', 'A Little', and 'Not at All'. The 'A Little' option is selected, indicated by a small black dot next to the person icon. At the bottom of the screen is a dark blue button with the text 'Continue'.



Fall Risk Overview

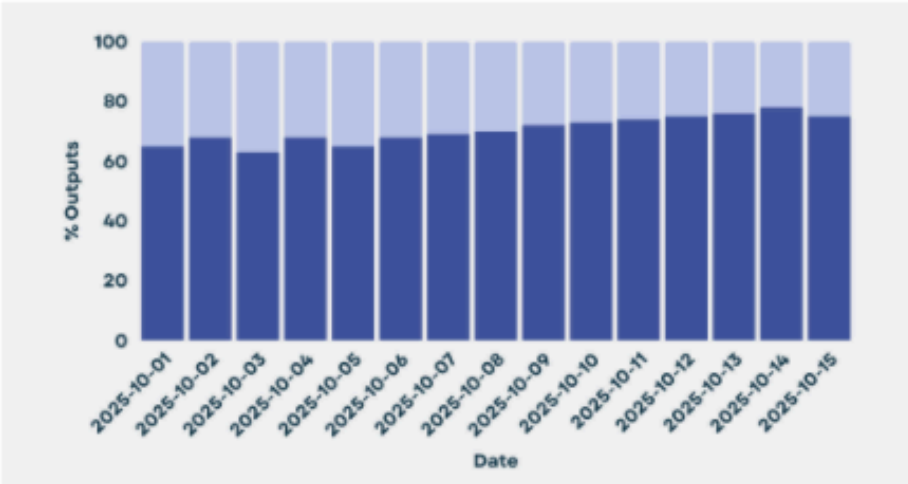
All Groups

Risk Distribution



Falls Risk Score (15 Days)

75% of cohort producing scores



Risk Level Changes (Last 15 Days)

+7 Users

Low to High Risk

+23 Users

High to Low Risk

All High Risk Users

Sort By: Statuses

User ID	Time Since Change	Days at High Risk	Group/Subgroup	Fall In Past Year	Clinical Frailty Scale	Actions
FBT-2458	Oct 15, 2025	32 days	The Landings	Yes	6 - Moderate Frailty	<button>View User</button>
FBT-1872	Oct 15, 2025	1 day	The Chimes	No	4 - Pre-Frail	<button>View User</button>
FBT-3291	Oct 15, 2025	4 days	The Chimes	Yes	7 - Severe Frailty	<button>View User</button>
FBT-1045	Oct 15, 2025	7 days	The Chimes	No	5 - Moderate Frailty	<button>View User</button>



Patient Profile

Name: Eleanor Thompson Email: ethompson@gmail.com ID: PT-78542 Age: 76 Group: NL Falls Sub-Group: FNC Falls Pathway

Back to Dashboard

Current Fall Risk

HIGH RISK

High Risk Since: Oct 1, 2025

Last Intervention: Oct 17, 2025

Days at High Risk (30 days): 19 days

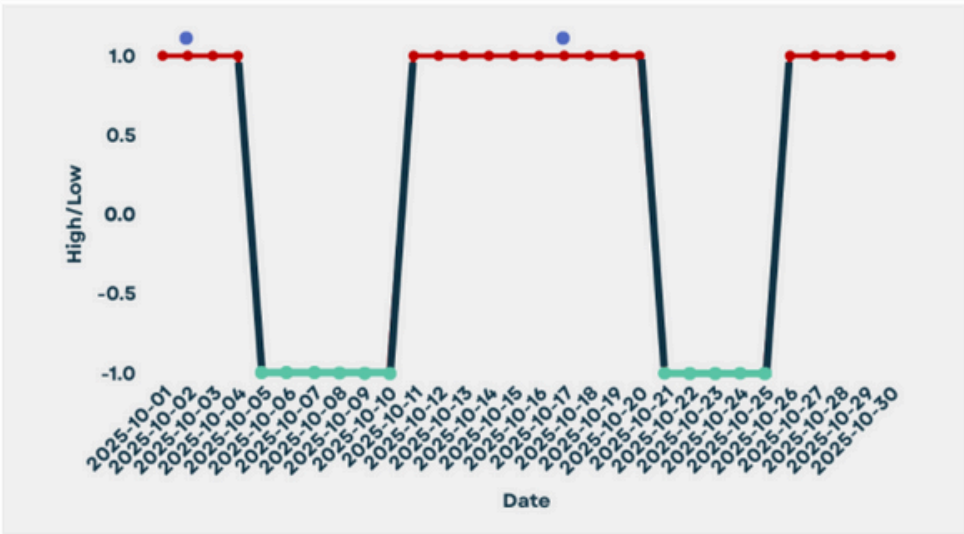
Days at Low Risk (30 days): 11 days

The Fall Risk indicator is not a clinical decision support system and is not classified as a Medical Device under current UK MDR regulations. It must not be used to:

- Diagnose, triage, or determine treatment for any health condition;
- Substitute or override professional clinical judgement at the point of care;
- Serve as an emergency response or real-time alerting system.

Fall Risk Over Time (Last 30 Days)

- High Risk
- Low Risk
- Intervention



Intervention History

Log Intervention

Date	Author	Type	Notes
Oct 12, 2023	Dr. Sarah Mitchell	Medication Review	Adjusted blood pressure medication dosage to reduce dizziness. Follow-up in 2 weeks.
Sep 28, 2023	Nurse James Wilson	Home Assessment	Recommended removal of throw rugs and installation of bathroom grab bars.
Sep 15, 2023	PT Lisa Rodriguez	Balance Training	Started twice-weekly balance exercises. Patient shows good compliance but needs supervision.
Aug 30, 2023	Dr. Robert Chen	Initial Assessment	Comprehensive fall risk assessment completed. Referred to PT for balance training.

Document Intervention

Back to User



Eleanor Thompson

ID: PT-78945 DOB: 15/03/1942 (81 yrs) High Fall Risk

Intervention Date

DD/MM/YYYY

Intervention Time

HH:MM

Intervention Type

Select intervention type

Intervention Notes

Subjective / Reason for Visit / Problem:

Objective Stats / Results:

Assessment:

Plan:

Follow-up Required

☐ Yes ☐ No

Priority Flag

☐ Low ☐ Medium ☐ High

Cancel

Save Intervention

Recent Interventions

Date	Type	Staff	Follow-up	Priority	Actions
12/06/2025 09:15	Phone Call	Nurse Emma Clark	19/06/2023	Medium	View
28/05/2025 14:30	Home Visit	Sarah Wilson	12/06/2023	Low	View
15/05/2025 11:00	Email	Social Worker James Brown	28/05/2023	High	View

Recent Falls

Most Recent Fall: October 5, 2025

Location:
Bathroom

Reason:
Loss of Balance

Description:
Patient reported feeling dizzy when getting up to use the bathroom. Lost balance while attempting to sit on toilet. No loss of consciousness reported.

Time of Day:
Morning

Injury:
Minor Bruising

Total Falls (Last 12 months): 3

Falls Resulting in A&E: 1

Assessments

Level 2 Fall Risk Assessment

Assessment Date: September 30, 2025

View Full Assessment

Comprehensive Geriatric Assessment

Assessment Date: September 20, 2025

View Full Assessment

Life Satisfaction

Assessment Date: September 10, 2025

View Full Assessment

Level 2 Fall Risk Assessment

Assessment Date: September 20, 2025

Response Review:

- Fall in Past 12 Months: Yes
- Fear of Falling: Yes
- Four or more medications: yes
- Vision Impairment: yes
- Cognitive Function: Mild Cognitive Impairment

Clinical Frailty Scale

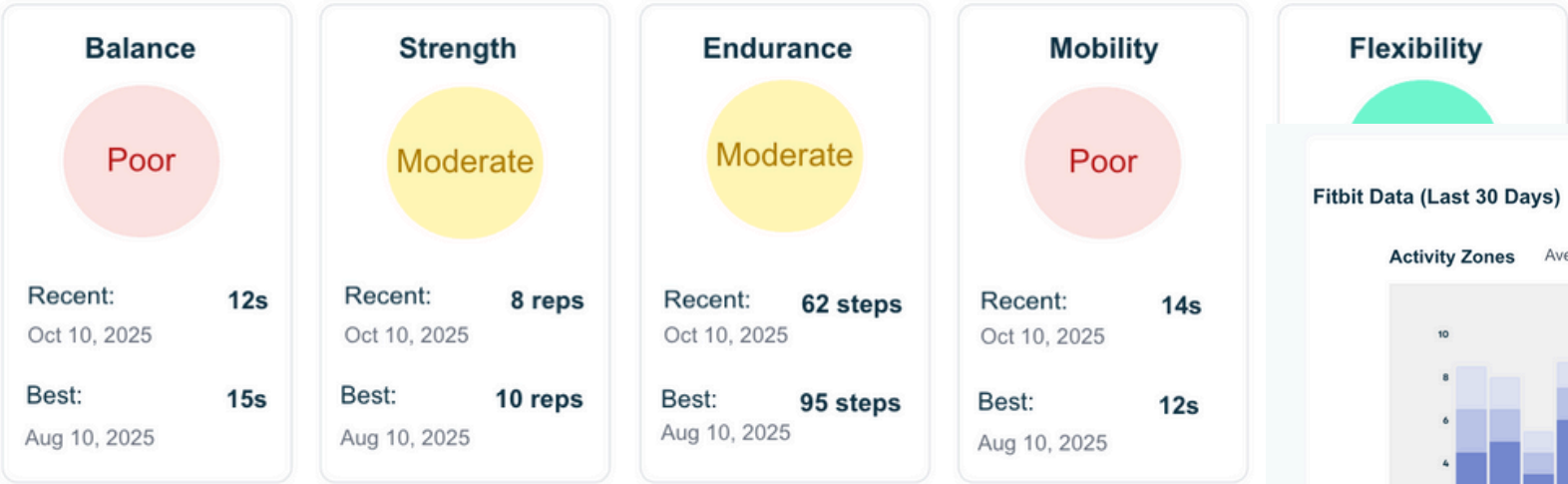


Level 5

Mild Frailty

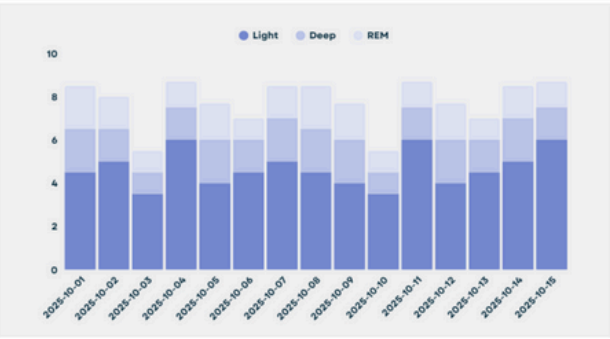
Patient shows slowing and needs help with high-order IADLs (finances, transportation, heavy housework).

Functional Fitness Test Scores

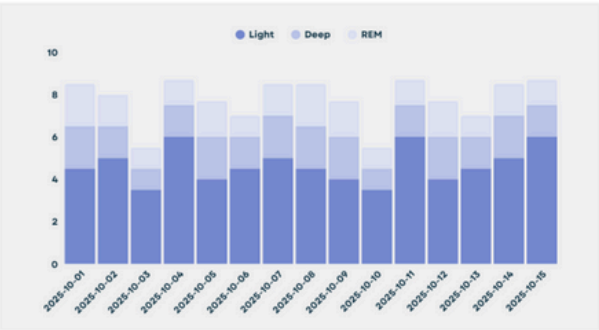


Fitbit Data (Last 30 Days)

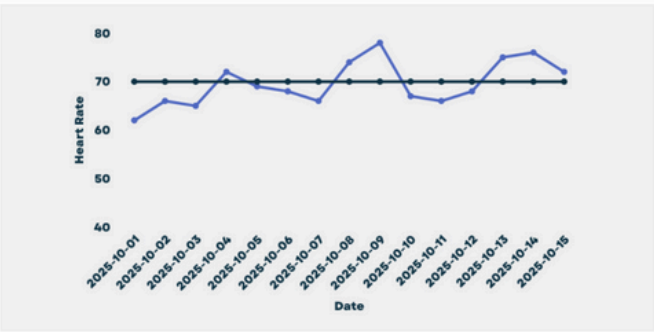
Activity Zones Average: 30 minutes moderate activity



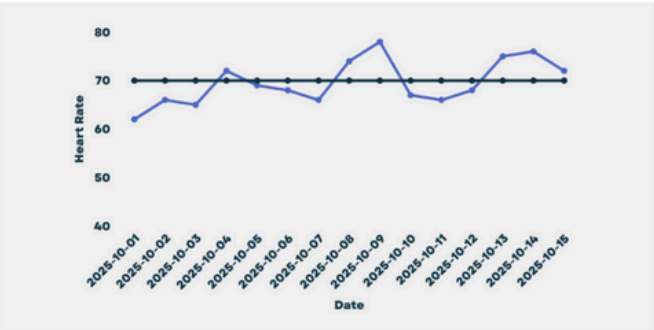
Sleep Duration Average: 6.2 hrs



Step Count Average: 4,478 steps



Resting Heart Rate Average: 78 bpm



THANK YOU

gsprague@smplicare.com
+44 (0) 7748 813380

Smplicare
Enjoy later life

